

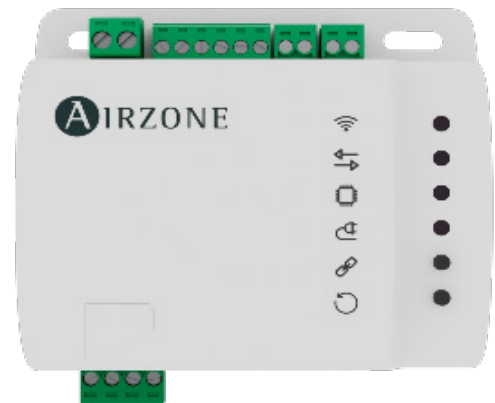
**AZAI6WP2GHC - Aidoo Pro STI GHC**

Location:	Approval:
Engineer:	Date:
Submitted to:	Construction:
Submitted by:	Unit #:
Reference:	Drawing #:
Additional Info:	

**MODEL DESCRIPTION**

Device to manage and integrate units remotely from the Cloud. Online control with the “Airzone Cloud” App (available for iOS and Android). Wireless Dual Wi-Fi connection (2.4/5 GHz). Powered by an external 24 VAC power supply unit that is not included. Features:

- Unit control and error detection.
- Configurable digital input for open window detection or occupancy presence.
- Auxiliary heat control and heat source locking.
- Automatic change of the operation mode with the adjustment of two set-point temperatures.
- Temperature limitation for cooling and heating modes.
- Status, temperature, mode and speed time schedules.
- Cloud and wired integration with third-party smart thermostats (3PI).
- Integration via Modbus RTU/TCP or BACnet MS-TP/IP.
- Local API and Cloud API integration services, mDNS multicast.



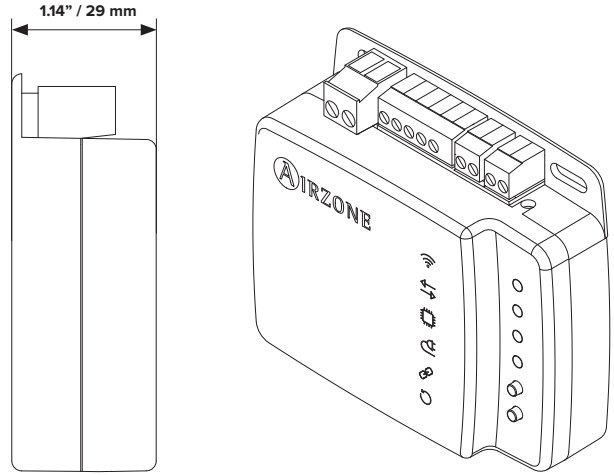
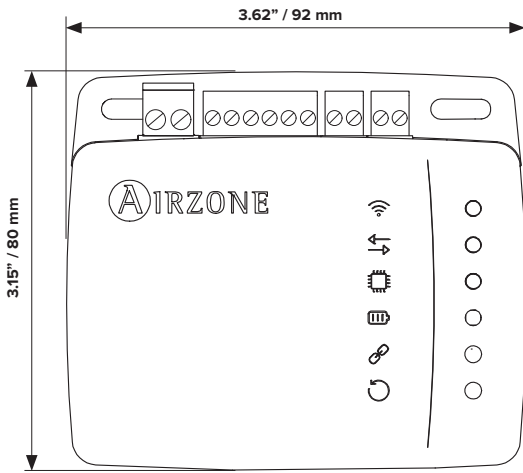
[Click to download](#)

**TECHNICAL SPECS**

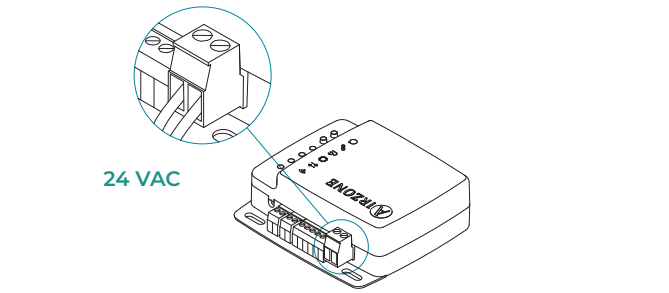
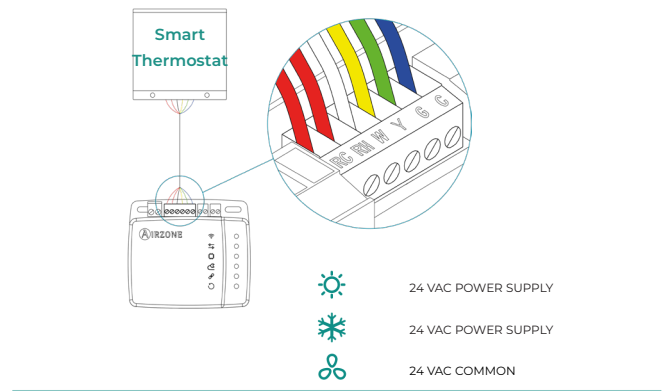
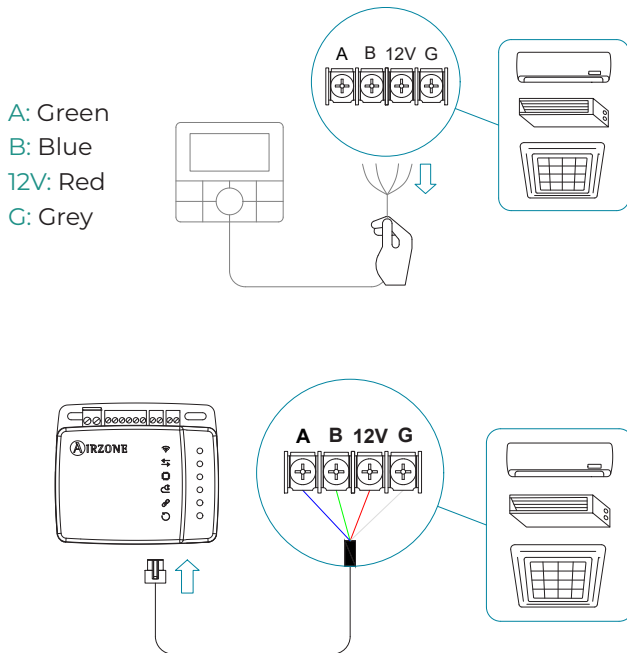
<b>RS485 Port</b>	
Communication protocol	RS-485 BACnet MS-TP Par – 19200 bps
Shielded twisted pair	AWG 24 – 2 wired + AWG 20 – 1 wired 2 x 0.20 + 1 x 0.5 mm <sup>2</sup> Min: 0.2 mm <sup>2</sup> / Máx: 1.5 mm <sup>2</sup>
<b>Connection to indoor unit</b>	
Max. distance	32.8 ft (10 m)
<b>Digital input</b>	
State	Voltage-free
Max. distance	32.8 ft (10 m)
<b>Relay output</b>	
State	Voltage-free
<b>3PTI Bus</b>	
N° of pins	6 (RC, RH, W, Y, G, C)
V out (RC, RH, C)	24 VAC
Max. distance	8.2 ft (2.5 m)
<b>Power supply and consumption</b>	
Type of power supply	VAC
V in	24 VAC
V max / I max	30 VAC / 0.35 A
Frequency	60 Hz
Consumption	2.68 W

<b>WI-FI</b>	
Protocol	WI-FI – CERTIFIED TM 802.11a/b/g/n/ac (802.11n up to 150 Mbps)
Model	LBEE5HY1MW
Communication frequency	2.4 GHz (max. 150 Mbps) 5 GHz (max. 433 Mbps)
Max. power, Antenna power	17.93 dBm, 0.1 dBi
Sensitivity	- 82 dBm
IP address	DHCP
<b>Bluetooth</b>	
Protocol	Bluetooth v5.0 EDR and BLE specification
Bluetooth class	Class-1, class-2 and class-3 transmitter
<b>Operating temp.</b>	
Storage	- 4 ... 158 °F (- 20 ... 70 °C)
Operation	32 ... 113 °F (0 ... 45 °C)
Operating humidity range	5 ... 90 % (non-condensing)
<b>Mechanical aspects</b>	
Maximum operating height	6561.68 ft (2000 m)
Protection class	IP 41
Weight	0.29 lb (130 g)

### DIMENSIONAL DRAWINGS



### INSTALLATION



**Important:** Use only one power supply per device and be sure to connect it exclusively to the terminal designated for the power supply. The device will supply power to the smart thermostat connected through the 3PTI bus; **do not** wire any other source on the thermostat terminals.

### SPARE PARTS

- AZPV8WIRE07010 - Connection to Indoor unit 3.28 ft (1 m) / AWG 24 - 6 wired (6x0.2 mm<sup>2</sup>)

### ACCESSORIES

- AZPV8WIREU - Universal 6-pin 8.2 ft (2.5 m) extension cable for Airzone gateway / Aidoo



Marie Curie, 21  
29590 Málaga, Spain

