



EN

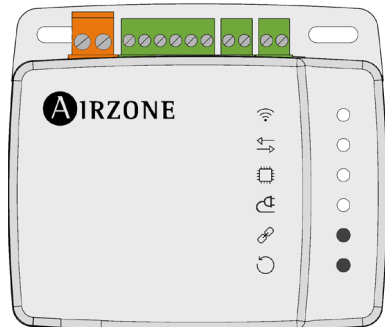
Quick Guide

Aidoo Pro Aquarea Checker

Panasonic

For PAW-A2W-MBS-MA

[For AZAI6WSPCHKPN9]



AIRZONE

Index

PRECAUTIONS AND ENVIRONMENTAL POLICY	3
> Precautions	3
> Environmental policy	3
AIDOO PRO AQUAREA CHECKER	4
> Device elements	4
CONNECTION	5

Precautions and environmental policy

PRECAUTIONS

- For your security, and to protect the devices, follow these instructions:
- Do not manipulate the system with wet or damp hands.
- Disconnect the power supply before making any connections.
- Take care not to cause a short circuit in any of the system connections.

ENVIRONMENTAL POLICY



Do not dispose of this equipment in the household waste. Electrical and electronic equipment contain substances that may damage the environment if they are not handled appropriately. The symbol of a crossed-out waste bin indicates that electrical equipment should be collected separately from other urban waste. For correct environmental management, it must be taken to the collection centers provided for this purpose, at the end of its useful life.

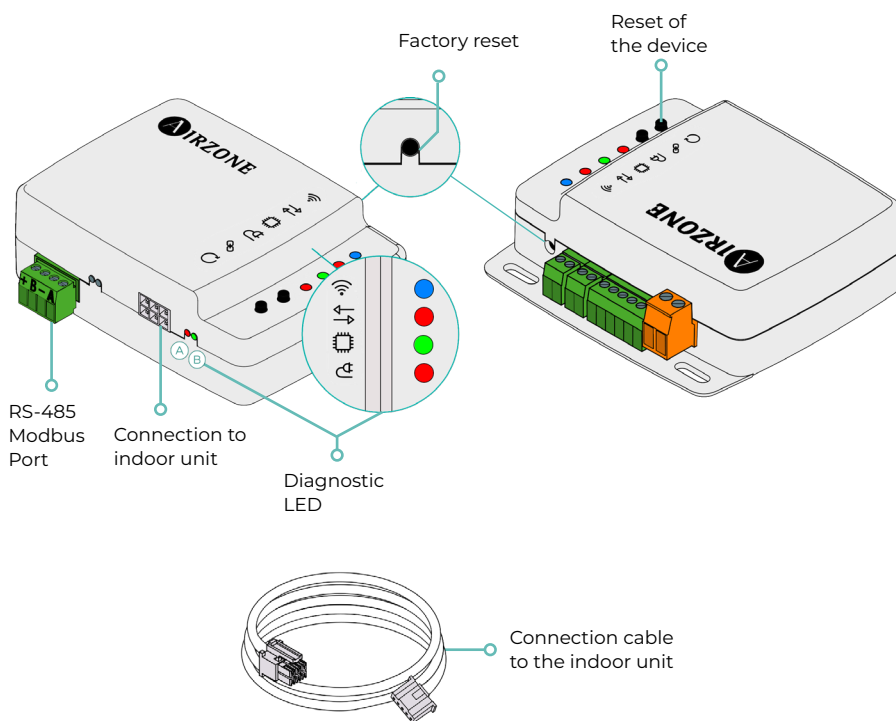
The equipment components may be recycled. Act in accordance with current regulations on environmental protection. If you replace it with other equipment, you must return it to the distributor or take it to a specialized collection center.

Those breaking the law or by-laws will be subject to such fines and measures as are laid down in environmental protection legislation.

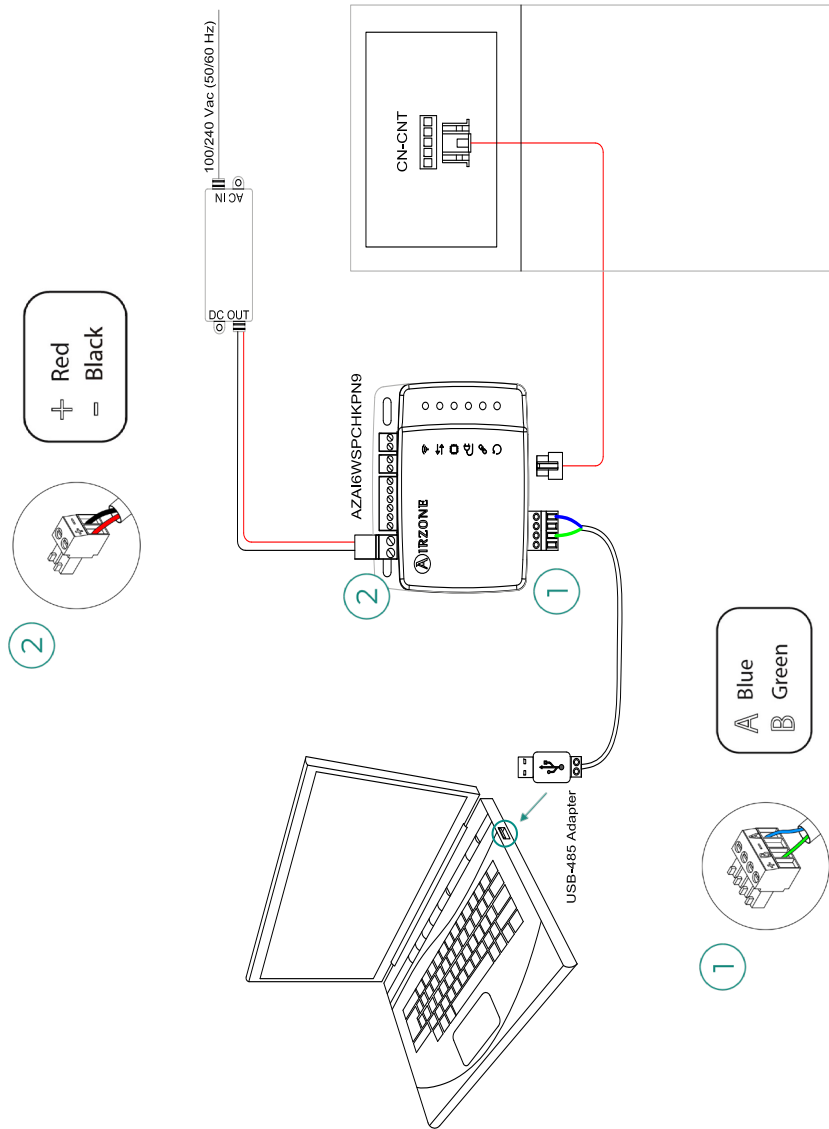
Aidoo Pro Aquarea Checker

Device for integration of metering sensors with Panasonic Aquarea units. Port for integration via Modbus protocol. Control via the "Gateway Setup for Panasonic" App (available for iOS and Android). Wireless connection via Bluetooth. Power supplied through the indoor unit.

DEVICE ELEMENTS



Connection



Panasonic



airzonecontrol.com

Marie Curie, 21
29590 Málaga
Spain

v. 100

