

AZVAFLITEC - Wired Life Thermostat

Location:	Approval:
Engineer:	Date:
Submitted to:	Construction:
Submitted by:	Unit #:
Reference:	Drawing #:
Additional Info:	

MODEL DESCRIPTION

Thermostat with capacitive buttons for controlling the temperature of the zones in Airzone systems. Wired communications. Powered by zone module.

Functionalities:

- On/off of the zone.
- Control of the Set-point temperature (Accuracy: $\pm 2^{\circ}\text{F}$ / 1°C , up to a limit of $\pm 3^{\circ}\text{C}$ / 6°F .)
- Room temperature and relative humidity reading.

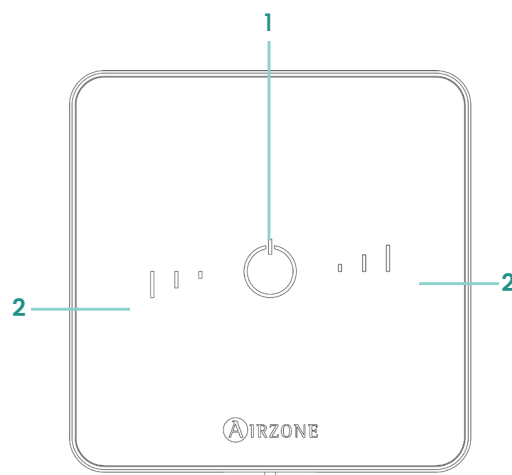
TECHNICAL SPECS

Power supply and consumption	
V máx.	12 Vdc
I máx.	30 mA
Stand-by consumption	240 mW
Connection and communications	
Type of cable	Shielded twisted pair
Communication wires	AWG 23 - 2 wired - (2 x 0,22 mm ²)
Power supply wires	AWG 20 - 2 wired - (2 x 0,5 mm ²)
Maximum distance in open space	130 ft (40 m)
Operating temperatures	
Storage	-4 ... 158 °F (-20 ... 70 °C)
Operation	32 ... 122 °F (0 ... 50 °C)
Operating humidity range	5...90% (non-condensing)
Set-point temperature range	59 ... 86 °F (15 ... 30 °C)
Reading accuracy	$\pm 1^{\circ}\text{F}$ ($\pm 0.1^{\circ}\text{C}$)
Relative humidity	$\pm 3\%$
Mechanical aspects	
Assembly	Surface through support
Protection class	IP 30
Type of probe	Airzone _10KΩ_NTC
Weight	0.40 lb (180 g)



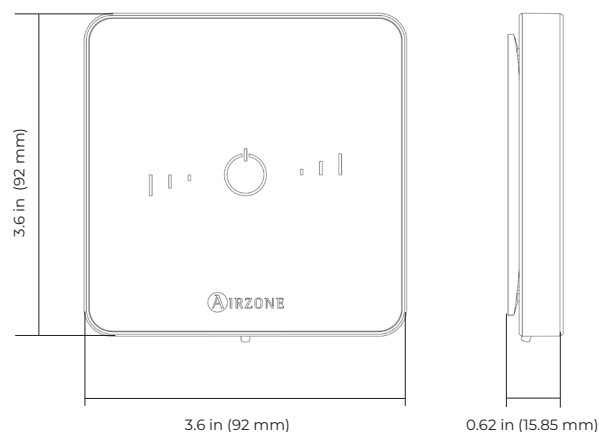
[Click to download](#)

FUNCTIONALITIES

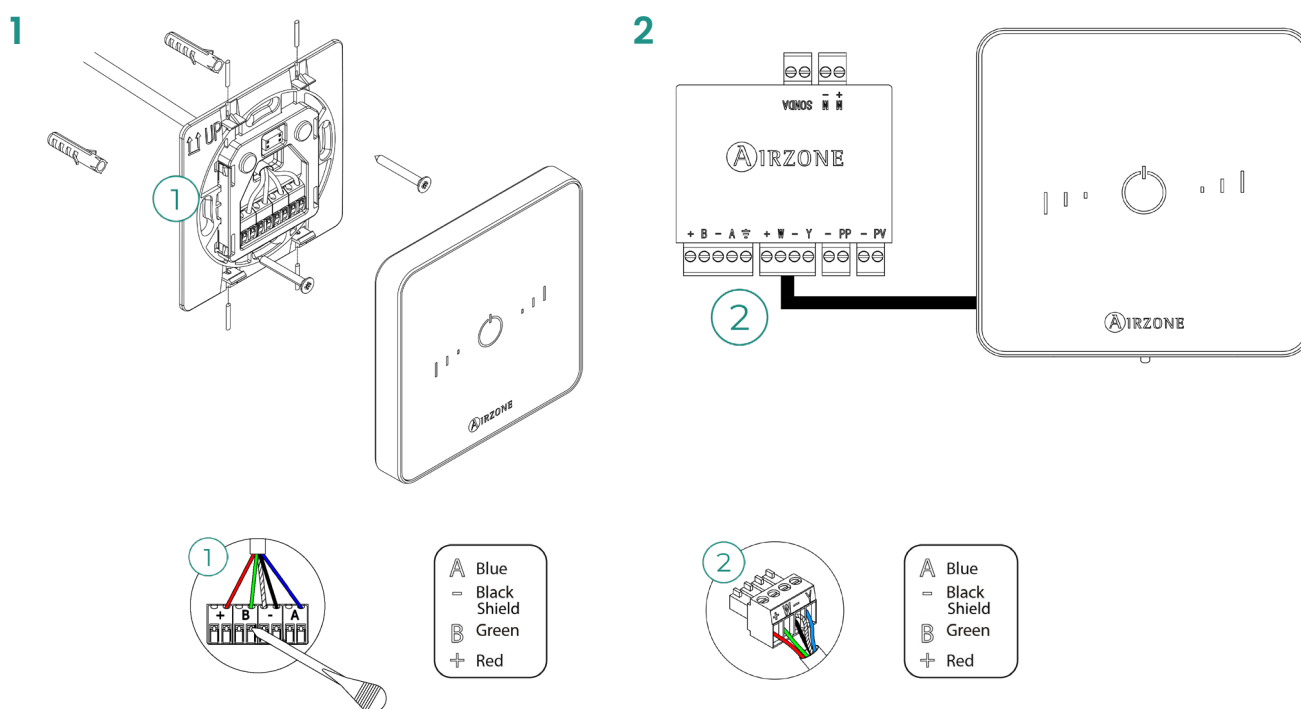


N°	Description	
1	If the LED is fixed, the zone is activated.	Operation mode: - Purple: Stop user mode - Red: Heating - Blue: Cooling or dry - Green: Set-point
	If the LED is flashing the zone is deactivated.	
2	If the led is on, it indicates there is a temperature gap between the set-point temperature and the base temperatura (1 led = $\pm 1^{\circ}\text{C}$ / 2°F).	
	If the led blinking it, indicates it has reached the temperature limit set by the User mode function.	

DIMENSIONAL DRAWINGS



INSTALLATION



SPARE PARTS

- AZPV6BASETHTC - Wired thermostat base replacement Airzone

ACCESSORIES

- AZX6CBLBUS300FT - Airzone bus cable



Marie Curie, 21
29590 Málaga, Spain

