



# Easyzone

Pre-Built Zoning Kit for Ducted  
Inverter/VRF Units

---

VERTICAL, MULTIPOSITION  
& HORIZONTAL AHUS



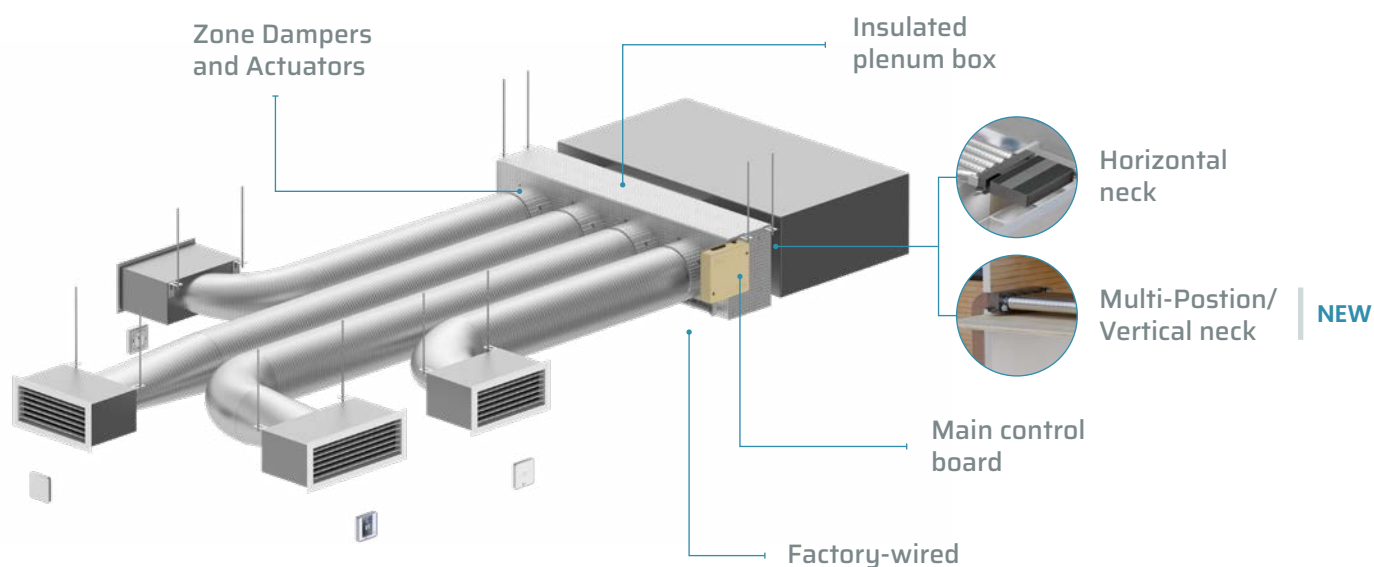


# The new generation of HVAC zoning is here!

## Quick and easy zoning installation for superior comfort and savings

**Easyzone is the all-in-one plug and play zoning solution** for ducted VRF and Inverter HVAC AHU. The highly efficient Easyzone system regulates the temperature in up to 6 zones independently when there is demand. It controls the indoor unit, adapting its set-point temperature and power output according to the status of each zone.

This means that with Easyzone, energy is only used in the occupied zones. So, not only thermal comfort is maximized in every zone, but energy efficiency and savings are also achieved both in installation and maintenance costs. Thus, **energy consumption savings can be up to 30%** and comfort can be ensured in all rooms of a building, at all times.

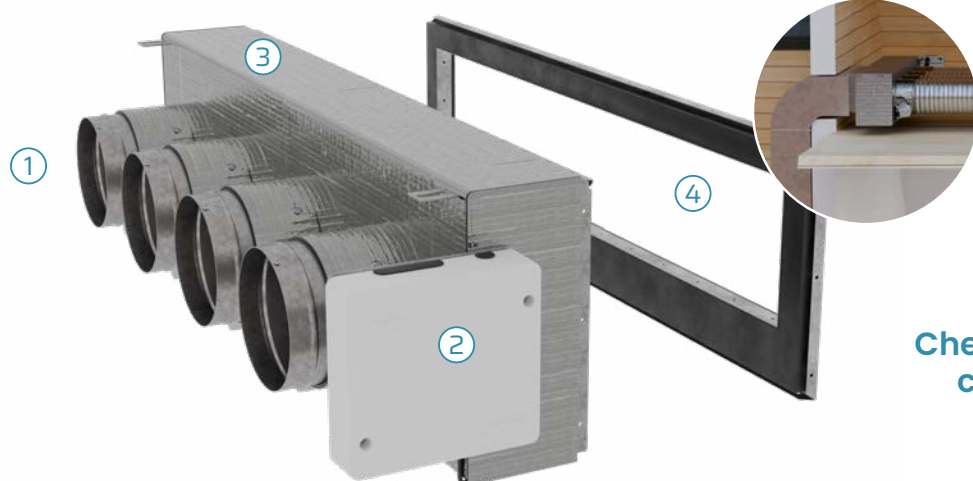


- Custom neck adapted for horizontal, vertical, and multipositional indoor units.
- Independent zone control.
- Airflow regulation and control.
- Increased energy efficiency.
- Control from anywhere, anytime through the Airzone Cloud App.
- Cloud and Voice control through the Airzone Webserver.

# Discover Easyzone

## Plenum

The Easyzone plenum is composed of a **insulated plenum box** that includes assembled motorized dampers, a control board with a communication gateway, and a neck that perfectly fits each indoor unit model, as it has been designed and adapted for each unit model. All components, besides thermostats, are already wired.



### NEW

Expanding our Plug & Play Zoning Control option for an even wider range of control

Check your AHU compatibility now! >>



**1. Zone Dampers with actuators:** up to 6 zone dampers with 6 and 8 inch options for increased zoning flexibility while helping to reduce installed equipment cost.

**2. Main control board:** seamless integration with the indoor unit to control the main parameters of the system (set-point temperature, fan speed, operation mode, etc..)

**3. Plenum Box:** pre-insulated plenum box.

**4. Plenum neck:** mechanical adaptation for each indoor unit (horizontal, vertical, multipositional).



### FULL CONTROL

**Wired and Wireless thermostat options** give complete control flexibility.



## Communication Gateway

Exclusive integration device between indoor HVAC unit and Airzone control system:

- Ducted HVAC units (Inverter/VRF).
- Dynamic control of the indoor unit fan speed.
- By-pass damper not required due to the control of the unit.
- Dynamic control of set-point temperature.
- Operation modes (Heat/Cool/Fan/On/Off).
- Original manufacturer protocol.



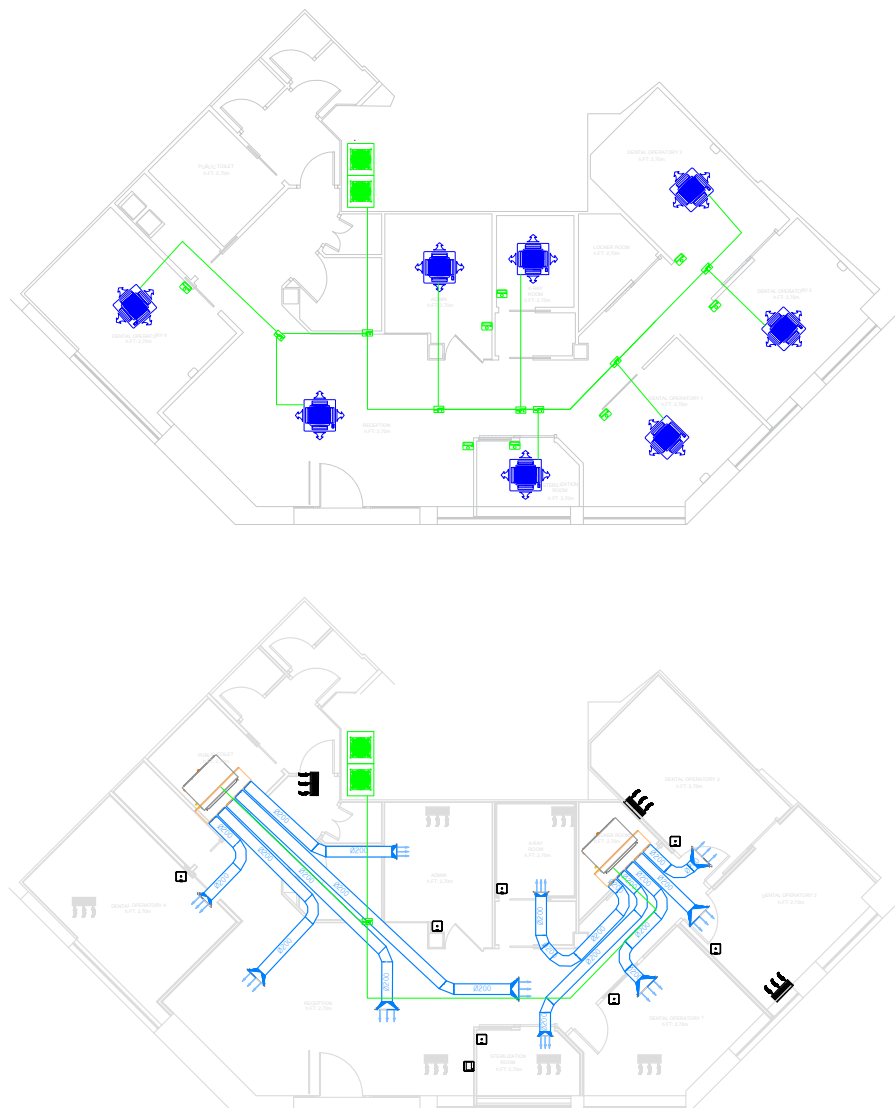
## Standard VRF application vs. VRF application with Easyzone

### STANDARD VRF APPLICATION

- 8 cassette units
- 70,500 BTU/h\*
- 339.9 ft of piping
- 16.03 lbs of R-32

### VRF APPLICATION WITH EASYZONE

- 2 ducted units
- 60,000 BTU/h\*
- 221.1 ft of piping
- 10.29 lbs of R-32



(\*) Total Capacity of All Indoor Units

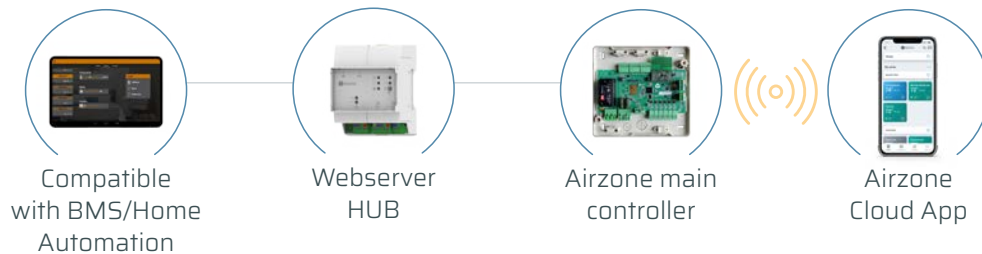


# Control From Anywhere

## Airzone Cloud App

The Easyzone plenum **can be controlled remotely via the Airzone Cloud app** that offers all the convenience of remote control.

- Available for iOS and Android.
- Multi-user and multi-session.
- Airtools for remote error code readings.



## Integration options

Airzone allows you to **integrate the entire HVAC application** with the main home automation and BMS systems.



>> Discover more



>> Video





AIRZONE NORTH AMERICA CORPORATION

**Projects:**

[projects\\_na@airzonecontrol.com](mailto:projects_na@airzonecontrol.com)

**Sales:**

[azna-staff@airzonecontrol.com](mailto:azna-staff@airzonecontrol.com)

**Tech Support:**

[techsupport\\_na@airzonecontrol.com](mailto:techsupport_na@airzonecontrol.com) | US 866-521-0263

[airzonecontrol.com](https://airzonecontrol.com)

