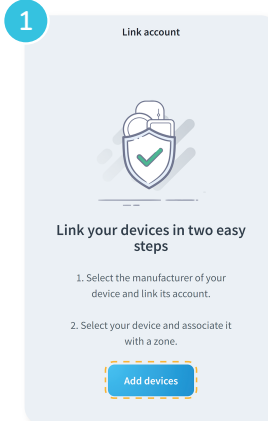


# AIDOO

## Pro

## How to set up your Aidoo with Smart Thermostat?

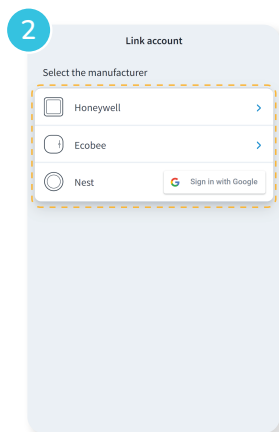
Here are step-by-step instructions 



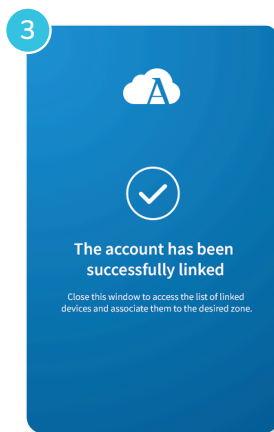
Open the "My Account" menu and click on "Integrations."

Choose your device's manufacturer and link its account.

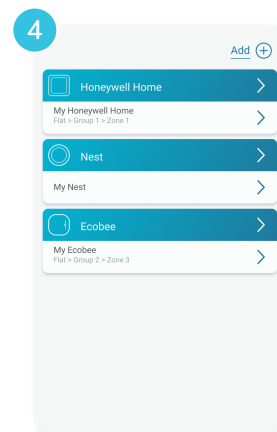
Select your device and associate it with a zone. Click "Add Devices."



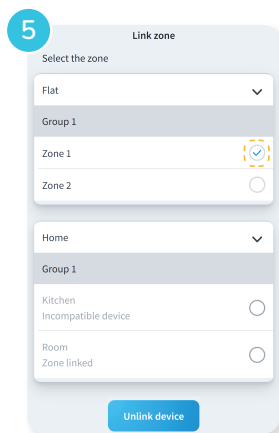
Select the Smart thermostat brand to link the accounts.



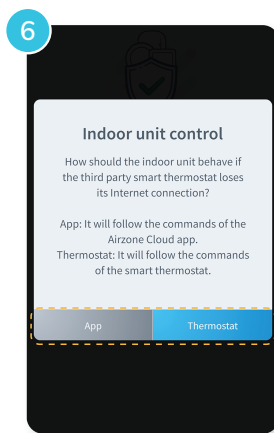
You'll be redirected to the manufacturer's website to **authorize the account link** using your user's credentials.



Once the account is connected, you'll see a list of devices associated with your account. **Click on the one you want to link with the zone.**



Select the zone that you want to connect with the smart thermostat.



To complete the connection, **choose how the zone should behave if the smart thermostat loses internet connection:**

**A)** The indoor unit will follow Airzone device orders.

**B)** The indoor unit will follow the commands from the smart thermostat (Please note that in the latter case, if you lose internet connection, you will also lose communication with your Airzone device, preventing you from controlling the associated zone through the Airzone App.)